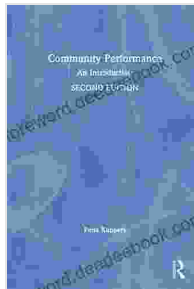


# Community Performance: An Introduction to Sophocles - A Comprehensive Exploration

Theatre, as we know and experience it today, has its roots in the vibrant and multifaceted world of ancient Greece. Among the towering figures of this era stands Sophocles, a playwright whose works continue to resonate with audiences across time and cultures. This article aims to provide a comprehensive to Sophocles and his contributions to the field of community performance within the context of Athenian democracy.



## Community Performance: An Introduction by Sophocles

★★★★★ 5 out of 5

Language	: English
File size	: 10939 KB
Text-to-Speech	: Enabled
Enhanced typesetting	: Enabled
Word Wise	: Enabled
Print length	: 277 pages
Screen Reader	: Supported
Paperback	: 114 pages
Item Weight	: 9.1 ounces
Dimensions	: 6.69 x 0.26 x 9.45 inches



## The Birthplace of Theatre: Ancient Athens

The city-state of Athens in the 5th century BCE was a cradle of innovation and intellectual brilliance. It was here that the concept of democracy took shape, and with it, the idea of a shared civic space where citizens could gather to participate in political, religious, and cultural activities. The theatre emerged as a central component of this civic life, offering a unique platform

for storytelling, exploring societal issues, and fostering a sense of community.

## **Sophocles: A Master of the Stage**

Sophocles, born in 496 BCE, was one of the most prominent playwrights of ancient Greece. Along with Aeschylus and Euripides, he formed the holy trinity of Attic tragedy, leaving behind a remarkable body of work that has shaped Western drama for centuries. Sophocles' plays were not mere entertainment; they were deeply rooted in the social and political realities of his time, reflecting the concerns, values, and aspirations of Athenian society.

## **Community Performance in Sophoclean Theatre**

Theatre in ancient Athens was a highly social and participatory experience. Plays were performed in large open-air theatres, known as amphitheatres, which could accommodate thousands of spectators. These performances were not exclusive events reserved for the elite; they were open to all citizens, regardless of their status or background. The audience was an integral part of the performance, actively engaging with the actors and influencing the course of the play.

The plays of Sophocles were often performed during religious festivals, such as the City Dionysia, which celebrated the god of wine and fertility. These festivals were opportunities for the community to come together and celebrate their shared heritage and beliefs. Theatre, with its captivating stories and thought-provoking themes, played a vital role in these rituals, reinforcing the bonds of the community and providing a shared space for reflection and discussion.

## **The Chorus: A Collective Voice**

One of the defining features of Sophoclean theatre is the use of the chorus. The chorus was a group of actors who sang, danced, and recited verse, commenting on the action of the play and providing a collective voice for the community. The chorus served several functions: it established the context of the play, provided emotional depth and resonance, and offered insights into the themes and dilemmas presented in the story.

The chorus in Sophocles' plays was often composed of citizens from different walks of life, reflecting the diversity of the Athenian community. This collective representation underlined the importance of civic participation and the shared responsibility for the well-being of the society.

## **Theatrical Conventions: Unveiling the Past**

The theatrical conventions of Sophocles' time were vastly different from those of modern theatre. Plays were performed in daylight, without elaborate sets or lighting effects. Actors wore stylized masks and costumes, amplifying their gestures and allowing the audience to focus on the language and the emotions conveyed through it.

The plays adhered to conventions of structure and form. The plots typically involved a conflict or dilemma faced by the protagonist, culminating in a moment of realization or resolution known as the anagnorisis. This structure provided a framework for exploring universal human experiences and examining the complexities of human nature.

## **Sophocles' Legacy**

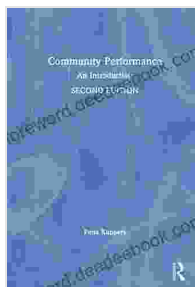
The contributions of Sophocles to community performance in ancient Athens are immeasurable. He transformed theatre from a mere form of

entertainment into a powerful medium for civic engagement and social reflection. His plays explored profound themes of justice, morality, human suffering, and the nature of fate, resonating with audiences across generations and cultures.

Today, Sophocles' works continue to be performed and studied worldwide. His characters, such as Oedipus, Antigone, and Electra, have become archetypes of human experience, embodying the struggles, triumphs, and flaws that define our existence. The theatrical conventions he established have influenced countless playwrights and theatre practitioners, shaping the art form itself.

Community performance, as exemplified by the works of Sophocles, was an integral part of Athenian democracy. It provided a unique platform for citizens to explore shared values, confront societal issues, and engage in collective reflection. Sophocles' masterful use of the chorus, innovative theatrical conventions, and profound storytelling contributed significantly to the development of theatre as a powerful force for social cohesion and cultural expression.

By understanding the context and significance of Sophocles' community performances, we gain a deeper appreciation for the origins of theatre and its enduring impact on human culture.

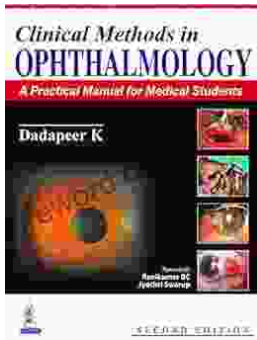


### **Community Performance: An Introduction** by Sophocles

★★★★★ 5 out of 5

Language : English  
File size : 10939 KB  
Text-to-Speech : Enabled  
Enhanced typesetting : Enabled  
Word Wise : Enabled  
Print length : 277 pages

Screen Reader : Supported  
Paperback : 114 pages  
Item Weight : 9.1 ounces  
Dimensions : 6.69 x 0.26 x 9.45 inches



## Practical Manual for Medical Students: The Ultimate Guide to Clinical Proficiency and Patient Care

The medical field is constantly evolving, demanding healthcare professionals to possess not only theoretical knowledge but also a high...



## Fully Updated and Revised: A Comprehensive Guide to the Newest and Most Exciting Changes in the Field

Welcome to our comprehensive guide to the latest updates and revisions across various fields. In today's rapidly evolving world, it's essential to stay...