

How Race, Class, and Gender Shape American Enterprise

Race, class, and gender are three of the most important factors that shape American enterprise. They determine who has access to opportunity, who is able to succeed, and who is left behind.

Race

The history of race in America is long and complex, and its legacy continues to shape the country today. Slavery, segregation, and discrimination have all created barriers to opportunity for people of color. As a result, African Americans, Latinos, and Native Americans continue to face significant economic disparities compared to white Americans.



The New Entrepreneurs: How Race, Class, and Gender Shape American Enterprise by Zulema Valdez

★★★★☆ 4.2 out of 5

Language : English
File size : 1083 KB
Text-to-Speech : Enabled
Screen Reader : Supported
Enhanced typesetting : Enabled
Word Wise : Enabled
Print length : 206 pages



For example, the median wealth of white households is ten times higher than the median wealth of black households. And while the unemployment

rate for white Americans is 4%, the unemployment rate for black Americans is twice as high.

These disparities are not just a matter of statistics. They have a real impact on the lives of people of color. For example, they can make it difficult for people to buy homes, start businesses, or save for retirement.

Class

Class is another important factor that shapes American enterprise. The class system in the United States is based on a combination of factors, including income, education, occupation, and wealth. People in different classes have different access to opportunity, and they are likely to experience different outcomes in life.

For example, people in the upper class are more likely to have access to quality education and healthcare. They are also more likely to have jobs that offer high pay and benefits. As a result, they are more likely to be able to accumulate wealth and pass it on to their children.

People in the lower class, on the other hand, are more likely to have difficulty accessing quality education and healthcare. They are also more likely to have jobs that offer low pay and few benefits. As a result, they are more likely to live in poverty and to struggle to make ends meet.

Gender

Gender is also a major factor that shapes American enterprise. In the United States, women have historically been discriminated against in the workplace. They have been paid less than men for the same work, and they

have been denied opportunities for advancement. As a result, women continue to face significant economic disparities compared to men.

For example, women earn only 82% of what men earn on average. And while the unemployment rate for men is 4%, the unemployment rate for women is 4.5%.

These disparities are not just a matter of statistics. They have a real impact on the lives of women. For example, they can make it difficult for women to support themselves and their families.

Race, class, and gender are three of the most important factors that shape American enterprise. They determine who has access to opportunity, who is able to succeed, and who is left behind. By understanding the impact of these factors, we can take steps to create a more just and equitable society.



The New Entrepreneurs: How Race, Class, and Gender Shape American Enterprise by Zulema Valdez

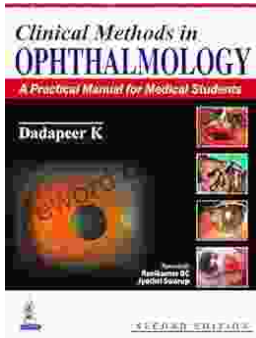
★★★★☆ 4.2 out of 5

Language : English
File size : 1083 KB
Text-to-Speech : Enabled
Screen Reader : Supported
Enhanced typesetting : Enabled
Word Wise : Enabled
Print length : 206 pages

FREE

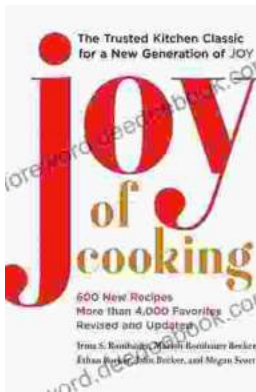
DOWNLOAD E-BOOK





Practical Manual for Medical Students: The Ultimate Guide to Clinical Proficiency and Patient Care

The medical field is constantly evolving, demanding healthcare professionals to possess not only theoretical knowledge but also a high...



Fully Updated and Revised: A Comprehensive Guide to the Newest and Most Exciting Changes in the Field

Welcome to our comprehensive guide to the latest updates and revisions across various fields. In today's rapidly evolving world, it's essential to stay...