

Saluki Care: Behavior, Diet, Interaction, Costs, and Health Care



Saluki Dog : Saluki Care, Behavior, Diet, Interaction, Costs And Health Care by Brenda Perlin

★★★★☆ 4.9 out of 5

Language : English
File size : 1107 KB
Text-to-Speech : Enabled
Screen Reader : Supported
Enhanced typesetting : Enabled
Print length : 15 pages
Lending : Enabled



Salukis are a graceful and elegant breed of sighthound that originated in the Middle East. They are known for their athleticism, speed, and independent spirit. While Salukis make wonderful companions, they require specific care in terms of behavior, diet, interaction, costs, and health care.

Behavior

Salukis are intelligent and independent dogs that can be stubborn at times. They are not well-suited for first-time dog owners. Salukis require a firm but gentle hand in training, and they should be socialized early on to avoid becoming shy or aggressive. They are also prone to separation anxiety, so it is important to provide them with plenty of attention and exercise.

- **Temperament:** Salukis are typically gentle and affectionate with their family, but they can be aloof with strangers. They are also known for

their independence and stubbornness.

- **Training:** Salukis are intelligent and eager to please, but they can be stubborn. Patience and positive reinforcement are key when training a Saluki.
- **Socialization:** Salukis should be socialized early on to avoid becoming shy or aggressive. They should be introduced to a variety of people, animals, and situations.
- **Exercise:** Salukis are active dogs that require plenty of exercise. They should be taken for at least two long walks or runs each day.

Diet

Salukis are not fussy eaters, but they do require a high-quality diet. They should be fed a diet that is high in protein and low in fat. Some good choices for Saluki food include:

- Lamb and rice
- Chicken and brown rice
- Fish and sweet potato

It is important to avoid feeding Salukis table scraps or processed foods. These foods can be high in fat and calories, which can lead to weight gain and other health problems.

Interaction

Salukis are social animals that enjoy spending time with their family. They are also very affectionate and love to be petted and cuddled. However, they

can be shy around strangers, so it is important to introduce them slowly to new people.

- **Family:** Salukis are devoted to their family and enjoy spending time with them. They are also very protective of their children.
- **Children:** Salukis are generally good with children, but they should be supervised around young children. They can be easily startled by sudden movements.
- **Other animals:** Salukis can be compatible with other dogs and cats, but they should be introduced slowly and carefully. They may also have a strong prey drive, so they should be kept on a leash when around small animals.

Costs

The cost of owning a Saluki can vary depending on a number of factors, including the breeder, the dog's age, and the region in which you live. However, you can expect to pay around \$1,000 to \$2,000 for a Saluki puppy. In addition, you will need to factor in the cost of food, vet care, grooming, and other supplies.

- **Initial costs:** The initial costs of owning a Saluki include the purchase price of the dog, as well as the cost of food, vet care, grooming, and other supplies.
- **Ongoing costs:** The ongoing costs of owning a Saluki include the cost of food, vet care, grooming, and other supplies. You may also need to factor in the cost of boarding or dog walking if you are away from home for extended periods of time.

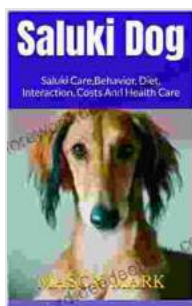
Health Care

Salukis are generally healthy dogs, but they are prone to a number of health problems, including:

- **Hip dysplasia:** This is a condition in which the hip joint does not develop properly. It can cause pain, lameness, and arthritis.
- **Elbow dysplasia:** This is a condition in which the elbow joint does not develop properly. It can cause pain, lameness, and arthritis.
- **Progressive retinal atrophy (PRA):** This is a degenerative eye disease that can lead to blindness.
- **Heart disease:** Salukis are prone to a number of heart diseases, including dilated cardiomyopathy and arrhythmias.

It is important to take your Saluki to the vet for regular checkups to ensure that they are healthy and to catch any health problems early on.

Salukis are wonderful companions, but they require specific care in terms of behavior, diet, interaction, costs, and health care. By understanding the unique needs of this breed, you can provide your Saluki with a long and healthy life.



Saluki Dog : Saluki Care, Behavior, Diet, Interaction, Costs And Health Care by Brenda Perlin

★★★★☆ 4.9 out of 5

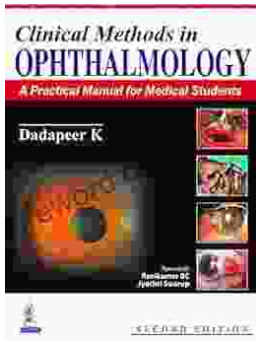
Language : English
File size : 1107 KB
Text-to-Speech : Enabled
Screen Reader : Supported
Enhanced typesetting : Enabled
Print length : 15 pages

Lending

: Enabled

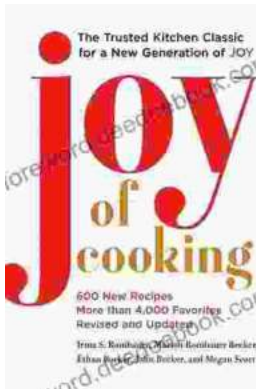
FREE

DOWNLOAD E-BOOK



Practical Manual for Medical Students: The Ultimate Guide to Clinical Proficiency and Patient Care

The medical field is constantly evolving, demanding healthcare professionals to possess not only theoretical knowledge but also a high...



Fully Updated and Revised: A Comprehensive Guide to the Newest and Most Exciting Changes in the Field

Welcome to our comprehensive guide to the latest updates and revisions across various fields. In today's rapidly evolving world, it's essential to stay...