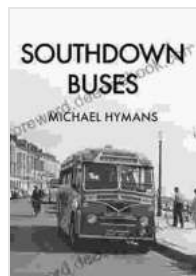


Southdown Buses: A Historical Journey with Michael Hymans

Southdown Buses, an iconic name in the annals of British transportation, has left an enduring legacy on the roads of Sussex and Hampshire. Its distinctive blue and grey livery, adorned with the eye-catching 'Southdown' logo, evokes memories of a bygone era when buses were a vital lifeline for communities.

At the heart of Southdown's story is Michael Hymans, a passionate bus enthusiast and historian who has dedicated his life to preserving the company's rich heritage. Through his tireless efforts, countless artifacts, vehicles, and documents have been salvaged from oblivion, giving us a glimpse into the fascinating world of Southdown Buses.



Southdown Buses by Michael Hymans

★★★★☆ 4.5 out of 5

Language : English
File size : 10446 KB
Text-to-Speech : Enabled
Screen Reader : Supported
Enhanced typesetting : Enabled
Word Wise : Enabled
Print length : 156 pages



A Bus Enthusiast's Dream

Michael Hymans' fascination with buses began at a tender age. Growing up in Southsea in the 1950s, he would spend hours watching the Southdown

buses pass by his window. The sleek lines, the vibrant colors, and the camaraderie of the crews ignited a spark within him.

As he grew older, Hymans' passion only intensified. He joined the Southdown Motor Services Society, a group of like-minded individuals who shared his love for the company. Together, they delved into the history of Southdown, amassing a collection of photographs, timetables, and other memorabilia.

In the early 1970s, Hymans' dream took a tangible form when he founded the Southdown Museum Trust. The trust's mission was to preserve the company's heritage and educate the public about its significance. Over the years, the trust has acquired a vast collection of vehicles, artifacts, and documents, which are now housed in a dedicated museum in Portsmouth.

The Glory Days of Southdown Buses

Southdown Motor Services, the predecessor of Southdown Buses, was founded in 1915 by four former employees of the London General Omnibus Company. The company's first route ran between Worthing and Littlehampton, and it soon expanded its operations throughout Sussex and Hampshire.

By the 1930s, Southdown had become one of the largest bus companies in Britain. Its iconic blue and grey livery, introduced in 1932, became instantly recognizable. The company's fleet included a wide range of vehicles, from small single-deckers to large double-deckers, each proudly displaying the Southdown name.

Southdown Buses played a vital role in the lives of the people of Sussex and Hampshire. They provided a reliable and affordable means of transportation, connecting communities and facilitating commerce. During the Second World War, Southdown buses were requisitioned for military use, transporting troops and supplies.

The Decline of an Empire

The post-war years brought about many changes for the bus industry. The arrival of private cars and the expansion of suburban railways led to a decline in bus usage. In 1983, Southdown Buses was sold to the National Bus Company, and its once-proud livery was replaced by a bland corporate identity.

In 1995, Southdown Buses was privatized and subsequently acquired by the Stagecoach Group. The Southdown name eventually disappeared from the roads, replaced by the Stagecoach livery.

Preserving the Legacy

Despite the decline of Southdown Buses, its legacy lives on through the work of Michael Hymans and the Southdown Museum Trust. The museum houses a vast collection of vehicles, artifacts, and documents, providing a tangible link to the company's past.

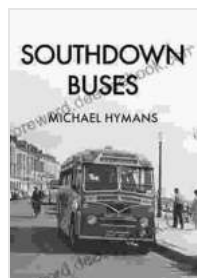
Among the highlights of the museum's collection is a Bristol K5G double-decker bus from 1949. This iconic vehicle, lovingly restored by volunteers, is a testament to Southdown's engineering prowess. The museum also houses a number of preservation vehicles, which are regularly used for special events and rallies.

Michael Hymans' dedication to preserving the legacy of Southdown Buses has been recognized with numerous awards and accolades. He has been awarded the British Empire Medal for his services to heritage, and he was inducted into the Southdown Motor Services Hall of Fame in 2019.

A Lasting Legacy

The story of Southdown Buses is a tale of innovation, resilience, and community spirit. Through the work of Michael Hymans and the Southdown Museum Trust, the legacy of this iconic bus company will continue to inspire future generations.

Southdown Buses may be gone from the roads, but its spirit lives on in the hearts of bus enthusiasts and historians alike. Michael Hymans' tireless dedication has ensured that the company's rich heritage will never be forgotten.

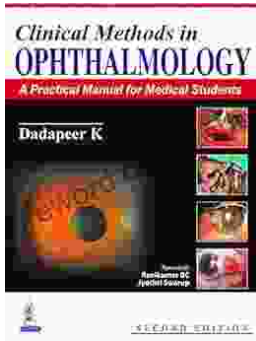


Southdown Buses by Michael Hymans

★★★★☆ 4.5 out of 5

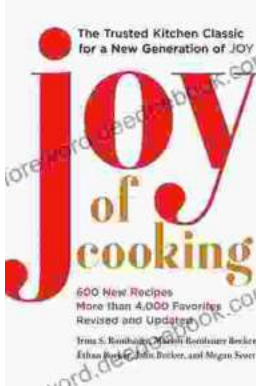
Language : English
File size : 10446 KB
Text-to-Speech : Enabled
Screen Reader : Supported
Enhanced typesetting : Enabled
Word Wise : Enabled
Print length : 156 pages





Practical Manual for Medical Students: The Ultimate Guide to Clinical Proficiency and Patient Care

The medical field is constantly evolving, demanding healthcare professionals to possess not only theoretical knowledge but also a high...



Fully Updated and Revised: A Comprehensive Guide to the Newest and Most Exciting Changes in the Field

Welcome to our comprehensive guide to the latest updates and revisions across various fields. In today's rapidly evolving world, it's essential to stay...