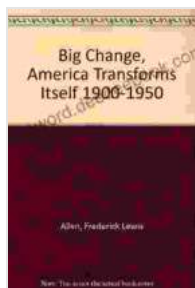


# The Big Change: America Transforms Itself, 1900-1950

The first half of the 20th century was a time of great change for the United States. The country's population grew from 76 million in 1900 to 151 million in 1950. The economy underwent a dramatic transformation, as the country became a global superpower. And the social and cultural landscape of the country was also transformed by a series of major events, including the Great Depression and the Second World War.



## The Big Change: America Transforms Itself, 1900–1950

by Frederick Lewis Allen

★★★★☆ 4.2 out of 5

Language : English

File size : 2082 KB

Text-to-Speech : Enabled

Screen Reader : Supported

Enhanced typesetting: Enabled

Word Wise : Enabled

Print length : 326 pages

Lending : Enabled

Hardcover : 226 pages

Item Weight : 12.7 ounces

Dimensions : 6.14 x 0.56 x 9.21 inches

FREE

DOWNLOAD E-BOOK



## Population Growth

The population of the United States grew rapidly in the first half of the 20th century. This growth was due to a number of factors, including immigration, improved medical care, and a decline in the fertility rate. Immigration was a

major factor in the country's population growth in the early 20th century. Between 1900 and 1920, over 20 million immigrants arrived in the United States. These immigrants came from all over the world, but the majority came from Europe. Improved medical care also contributed to the country's population growth. In the early 20th century, new medical discoveries and technologies helped to reduce infant mortality and increase life expectancy. The fertility rate also declined in the early 20th century. This decline was due to a number of factors, including the increasing availability of birth control and the increasing number of women entering the workforce.

The rapid population growth of the first half of the 20th century had a significant impact on the country. The country's cities grew rapidly, and new suburbs were built to accommodate the growing population. The country's economy also grew rapidly, as the increasing population provided a large pool of workers for businesses and industries. However, the rapid population growth also put a strain on the country's resources, and it contributed to a number of social problems, such as poverty and crime.

## **Economic Transformation**

The United States underwent a dramatic economic transformation in the first half of the 20th century. The country's economy grew rapidly, and the country became a global superpower. This economic growth was due to a number of factors, including the development of new technologies, the expansion of the manufacturing sector, and the rise of the service sector. The development of new technologies, such as the automobile, the airplane, and the telephone, helped to boost the country's economy. The expansion of the manufacturing sector also contributed to the country's economic growth. In the early 20th century, the United States became a major manufacturing power, and the country's factories produced a wide

range of goods, from automobiles to steel. The rise of the service sector also contributed to the country's economic growth. In the early 20th century, the service sector grew rapidly, and it became a major part of the country's economy.

The rapid economic growth of the first half of the 20th century had a significant impact on the country. The country's standard of living increased, and the country became a more affluent society. The country's economy also became more global, and the United States became a major player in the international economy. However, the rapid economic growth also led to a number of social problems, such as inequality and pollution.

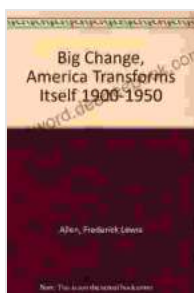
## **Social and Cultural Transformation**

The social and cultural landscape of the United States was also transformed by a series of major events in the first half of the 20th century. These events, including the Great Depression and the Second World War, had a profound impact on the country's social and cultural values. The Great Depression, which began in 1929, led to widespread unemployment and poverty. The Great Depression had a devastating impact on the country's social fabric, and it also led to a decline in the country's faith in capitalism. The Second World War, which began in 1939, also had a significant impact on the country's social and cultural values. The war led to a surge in patriotism and a renewed sense of national unity. The war also led to a number of social changes, such as the increased role of women in the workforce and the desegregation of the armed forces.

The major events of the first half of the 20th century had a significant impact on the social and cultural landscape of the United States. These events led to a number of social changes, and they also helped to shape

the country's values and beliefs. The first half of the 20th century was a time of great change for the United States. The country's population grew rapidly, the economy underwent a dramatic transformation, and the social and cultural landscape of the country was also transformed. These changes had a profound impact on the country, and they helped to shape the United States into the country it is today.

The first half of the 20th century was a time of great change for the United States. The population grew, the economy transformed, and the country's social and cultural landscape was also transformed by a series of major events. These changes had a profound impact on the United States, and they helped to shape the country into the country it is today.



## The Big Change: America Transforms Itself, 1900–1950

by Frederick Lewis Allen

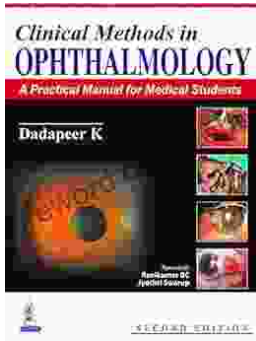
★★★★☆ 4.2 out of 5

Language	: English
File size	: 2082 KB
Text-to-Speech	: Enabled
Screen Reader	: Supported
Enhanced typesetting	: Enabled
Word Wise	: Enabled
Print length	: 326 pages
Lending	: Enabled
Hardcover	: 226 pages
Item Weight	: 12.7 ounces
Dimensions	: 6.14 x 0.56 x 9.21 inches

FREE

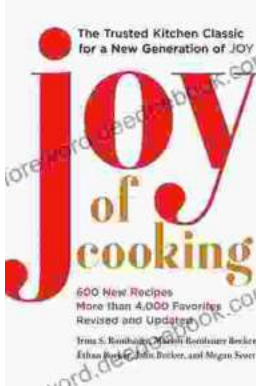
DOWNLOAD E-BOOK





## **Practical Manual for Medical Students: The Ultimate Guide to Clinical Proficiency and Patient Care**

The medical field is constantly evolving, demanding healthcare professionals to possess not only theoretical knowledge but also a high...



## **Fully Updated and Revised: A Comprehensive Guide to the Newest and Most Exciting Changes in the Field**

Welcome to our comprehensive guide to the latest updates and revisions across various fields. In today's rapidly evolving world, it's essential to stay...