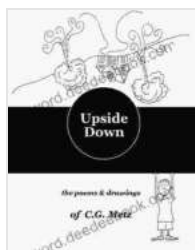


The Poems Drawings Of Metz: A Comprehensive Exploration

The Poems Drawings Of Metz are a series of remarkable artworks that combine poetry and drawing in a captivating and evocative manner. Created by the renowned French artist Jean-Baptiste Metz during the early 19th century, these works have captivated audiences with their poignant themes, exquisite craftsmanship, and profound insights into the human condition. In this comprehensive article, we embark on a journey to explore the history, symbolism, and artistic significance of The Poems Drawings Of Metz.



Upside Down: The Poems & Drawings of C.G. Metz

by C. G. Metz

★★★★☆ 4.2 out of 5

Language : English

File size : 25759 KB

Print length: 157 pages

Lending : Enabled



Historical Context

Jean-Baptiste Metz was born in Metz, France in 1784. He studied art at the École des Beaux-Arts in Paris, where he developed his exceptional skills as a draftsman and painter. During the Romantic period, Metz's work was influenced by the prevailing sentiments of melancholy, introspection, and a fascination with the natural world.

The Poems Drawings Of Metz were created between 1805 and 1810, a period marked by personal and political turmoil in Metz's life. The death of his beloved wife in 1806 deeply affected him, inspiring a profound sense of loss and yearning that permeates many of his drawings.

The Drawings

The Poems Drawings Of Metz consist of a series of approximately 50 drawings, each of which is accompanied by a brief poem. The drawings depict a wide range of subjects, including landscapes, figures, and abstract forms. Metz's mastery of line and composition is evident in the delicate and intricate details that bring his drawings to life.

One of the most striking features of The Poems Drawings Of Metz is the interplay between text and image. The poems provide a lyrical and evocative accompaniment to the drawings, deepening their meaning and enhancing their emotional impact. Metz's words often explore themes of love, loss, nature, and the complexities of the human heart.

Symbolism and Meaning

The Poems Drawings Of Metz are replete with symbolism, inviting viewers to ponder their deeper meanings. The recurring motif of the rose, for example, represents both beauty and transience. The use of light and shadow evokes the interplay between hope and despair. And the presence of natural elements, such as trees and water, symbolizes the interconnectedness of all living things.

Through his drawings and poems, Metz invites us to confront the universal human experiences of love, loss, and the search for meaning. He explores the fragility of life, the power of memory, and the longing for connection.

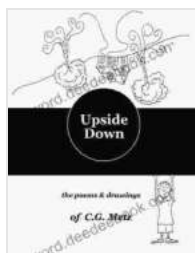
Artistic Significance

The Poems Drawings Of Metz have earned their place among the most significant works of Romantic art. Metz's innovative combination of poetry and drawing created a new and expressive form of artistic expression. His works have influenced generations of artists and continue to captivate audiences today.

Metz's mastery of line and composition is evident in the delicate and intricate details that bring his drawings to life. His use of light and shadow creates a sense of depth and atmosphere, while his subtle use of color adds to the emotional impact of his works.

Beyond their artistic merits, The Poems Drawings Of Metz are valuable historical documents that provide insights into the intellectual and cultural climate of the Romantic period. They offer a glimpse into the mind and heart of a remarkable artist and serve as a testament to the enduring power of human creativity.

The Poems Drawings Of Metz are a captivating and evocative collection of literary and visual art. With their poignant themes, exquisite craftsmanship, and profound insights into the human condition, they continue to resonate with audiences today. As we explore the history, symbolism, and artistic significance of these remarkable works, we gain a deeper understanding of the human experience and the transformative power of art.



Upside Down: The Poems & Drawings of C.G. Metz

by C. G. Metz

★★★★☆ 4.2 out of 5

Language : English

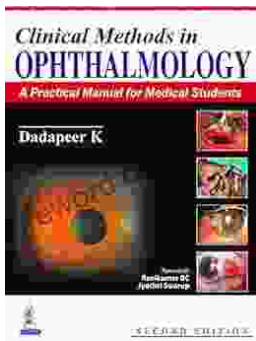
File size : 25759 KB

Print length : 157 pages

Lending : Enabled

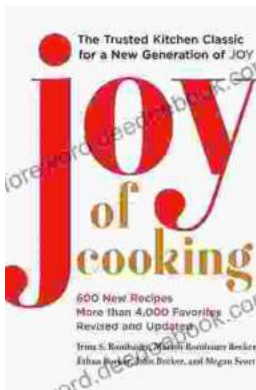
FREE

DOWNLOAD E-BOOK



Practical Manual for Medical Students: The Ultimate Guide to Clinical Proficiency and Patient Care

The medical field is constantly evolving, demanding healthcare professionals to possess not only theoretical knowledge but also a high...



Fully Updated and Revised: A Comprehensive Guide to the Newest and Most Exciting Changes in the Field

Welcome to our comprehensive guide to the latest updates and revisions across various fields. In today's rapidly evolving world, it's essential to stay...